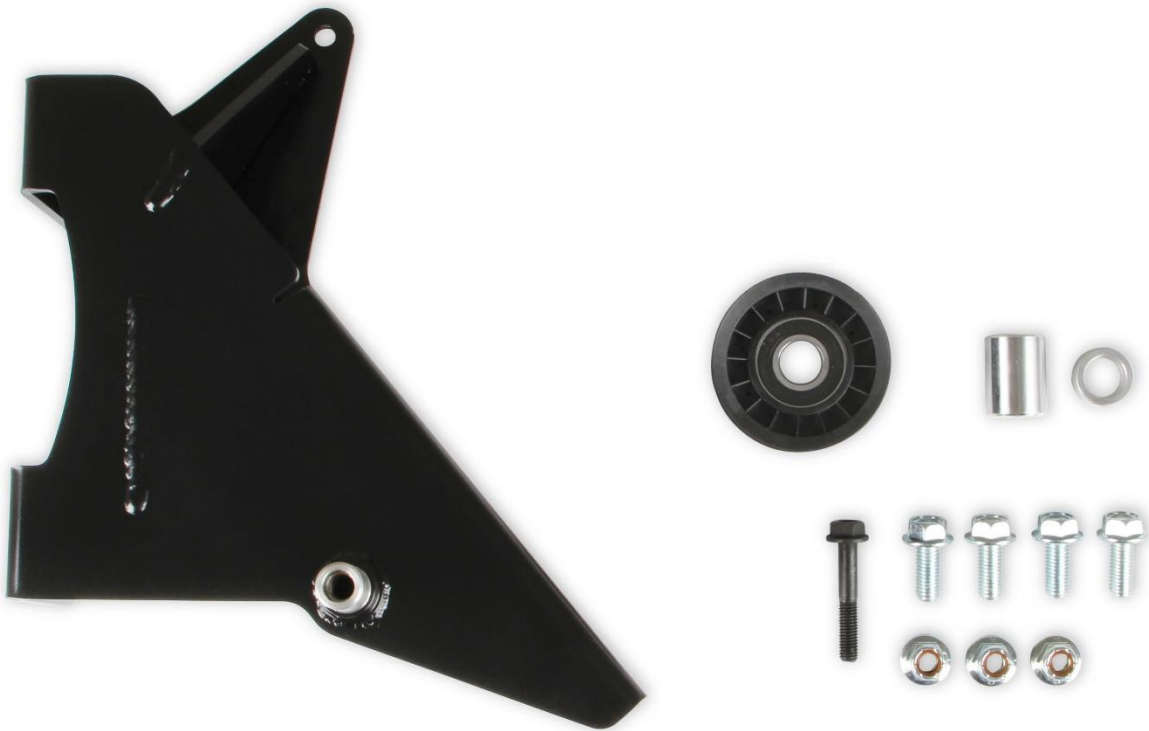




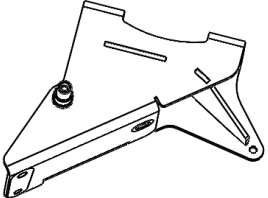
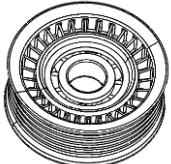


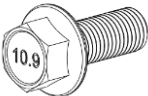
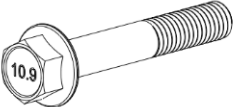
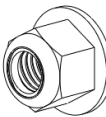
Holley Gen III Hemi Alternator Bracket Kit

For use with OEM Chrysler Alternator

97-347

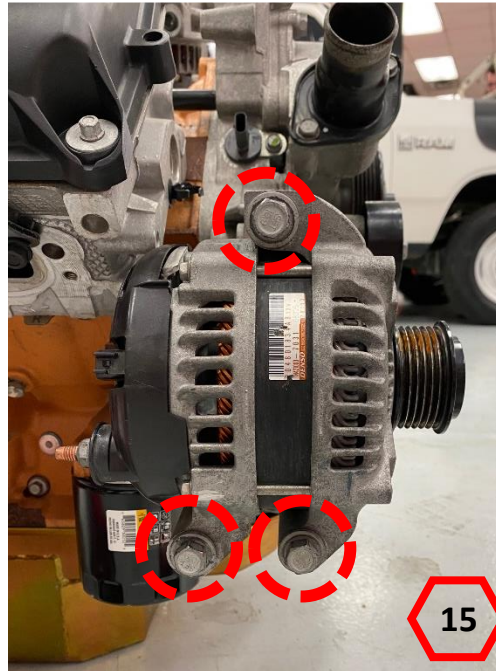


Parts List

Picture	QTY	DESCRIPTION	REPLACEMENT P/N
	1	Holley Gen III Alternator Bracket Kit, For use with OEM Chrysler Alternator	97-347
	1	Alternator Bracket Idler Pulley	Holley 69R448 or Gates/ACDelco 38008
	1	Idler Pulley Spacer	40R1063
	1	Alternator Bracket Spacer	40R1064
	4	M10 X 1.5 X 25MM Flanged Hex Head Bolt	N/A
	1	M8 X 1.25 X 50MM Flanged Hex Head Bolt	N/A
	3	M10 X 1.5 Nylon Lock Flanged Hex Head Nut	N/A
	1	Instruction Sheet	199R12066

Installation Process:

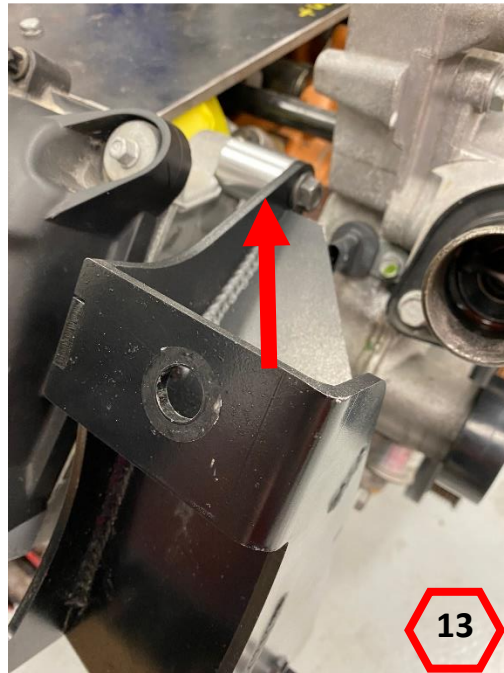
1. Remove the negative terminal from the battery. Disconnect all electrical connections from the alternator and remove it from its bracket by removing the (x3) M10 x 1.5MM bolts. Some vehicles will have additional supports for the alternator, these will need to be removed as well.



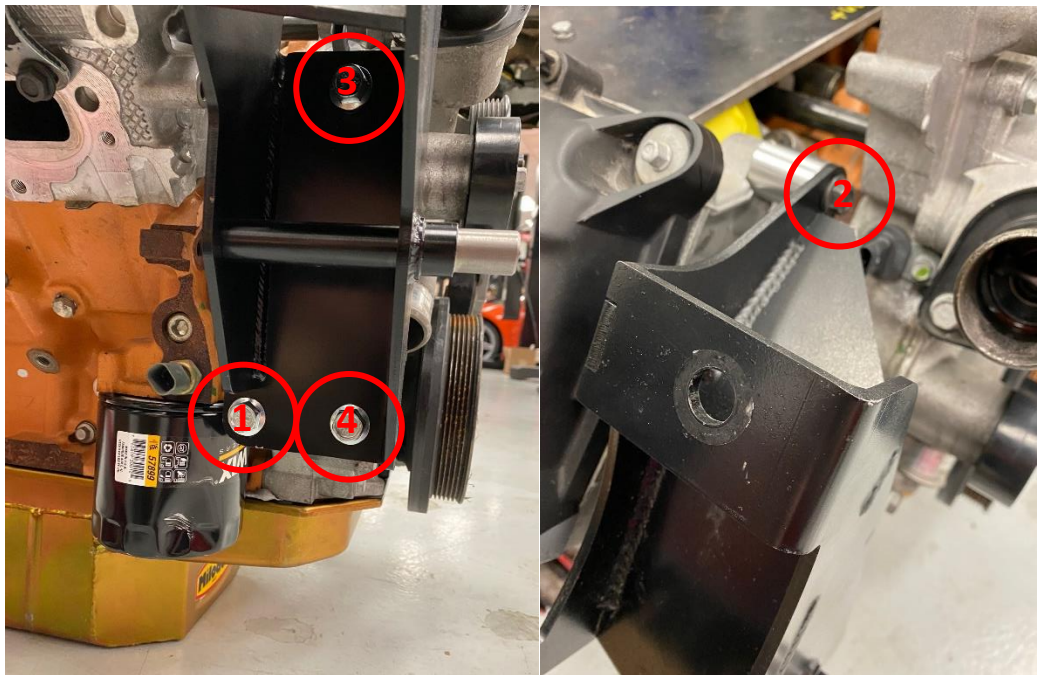
2. Clean the alternator mounting surface so that it is smooth and free of excessive corrosion. Using the supplied M10 x 1.5 x 25MM bolts, loosely install the Holley alternator bracket.
NOTE: Do not tighten the bolts at this time.



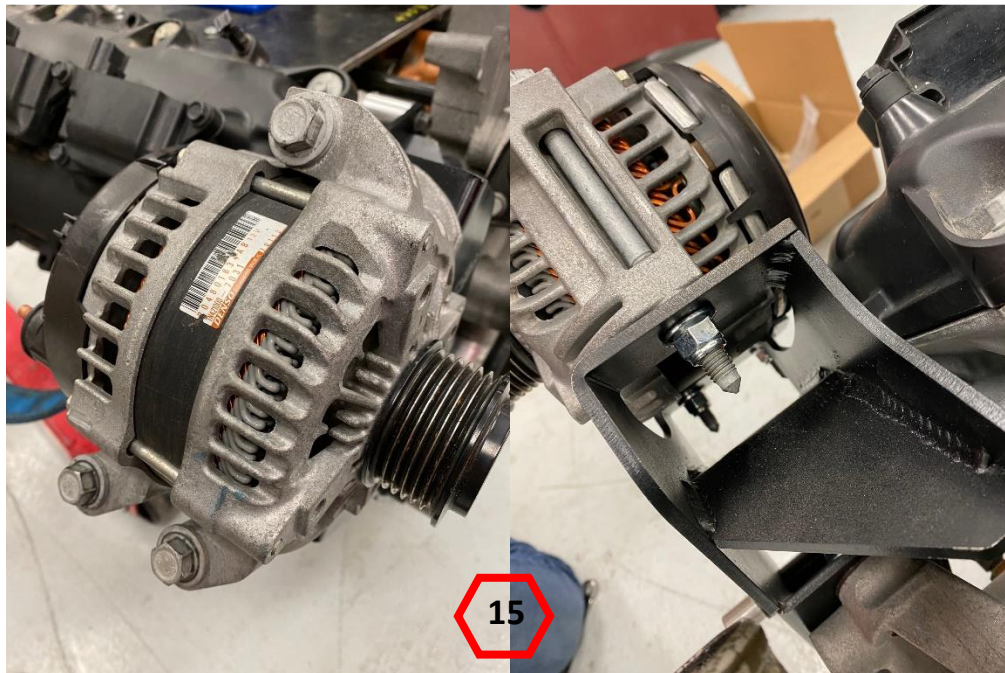
3. Next, loosely install the spacer and M8 x 1.25 x 50MM bolt into the top of the bracket.



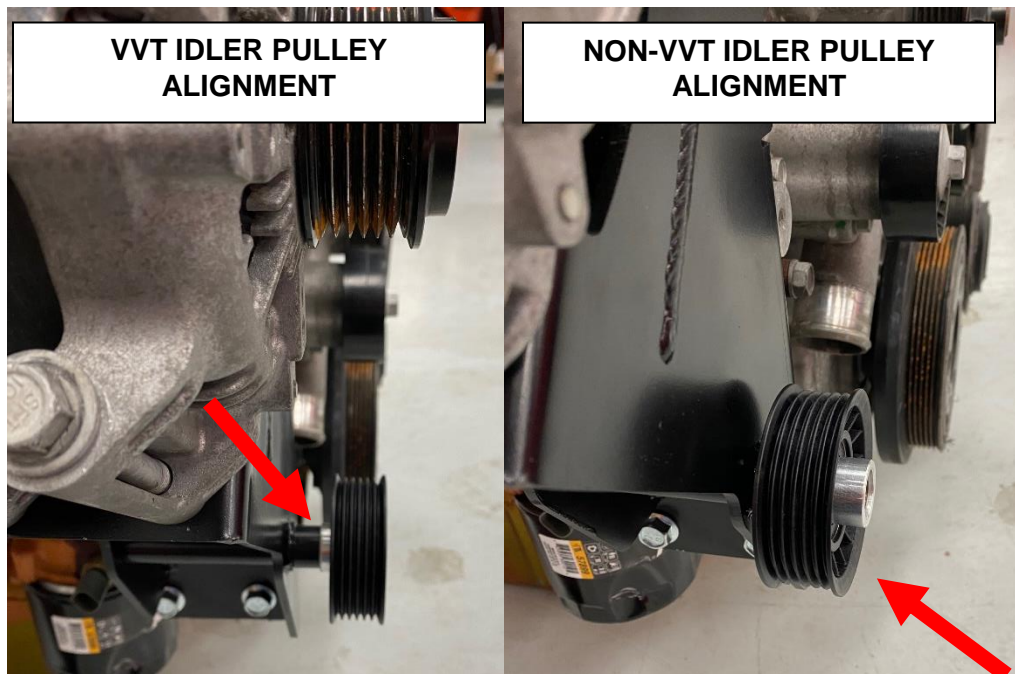
4. Torque each M10 x 1.5 bolt to 48 Ft. Lbs (65Nm) and the upper M8 x 1.25 to 21 Ft. Lbs (28Nm) following the below sequence.



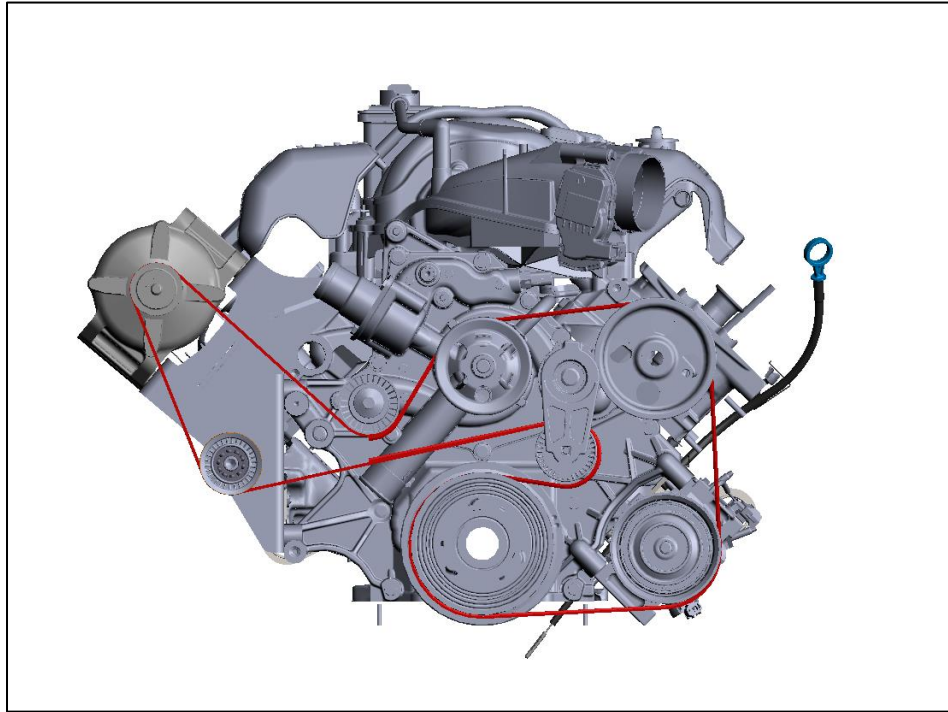
5. Next, install the OEM Chrysler alternator to the Holley bracket using the OEM bolts which were removed from the OEM bracket at step 1. Use the supplied flanged hex head locking nuts and torque the bolts to 48 Ft. Lbs (65Nm).



6. The supplied idler pulley spacer is required for correct belt alignment. If your engine is **equipped with VVT**, the spacer should be **behind the idler pulley**. If your engine is **not equipped with VVT**, the spacer should be in **front of the idler pulley**. Torque the M10 X 1.5 idler pulley bolt to 48 Ft. Lbs (65Nm).



7. Inspect the assembly and ensure all hardware has been torqued to the proper specification. A longer belt is required since the alternator position has moved. Holley recommends using a **20mm x 2492mm** belt, or **6K975**. This belt can be found at most automotive parts retailers. Below is the proper belt routing.



8. Attach all electrical connections to the alternator and start the engine. Observe the belt and ensure no slipping, binding, or excessive vibration is present. If the belt slips off, check to make sure you are using the proper idler pulley alignment position.



199R12066
Date: 4-29-20