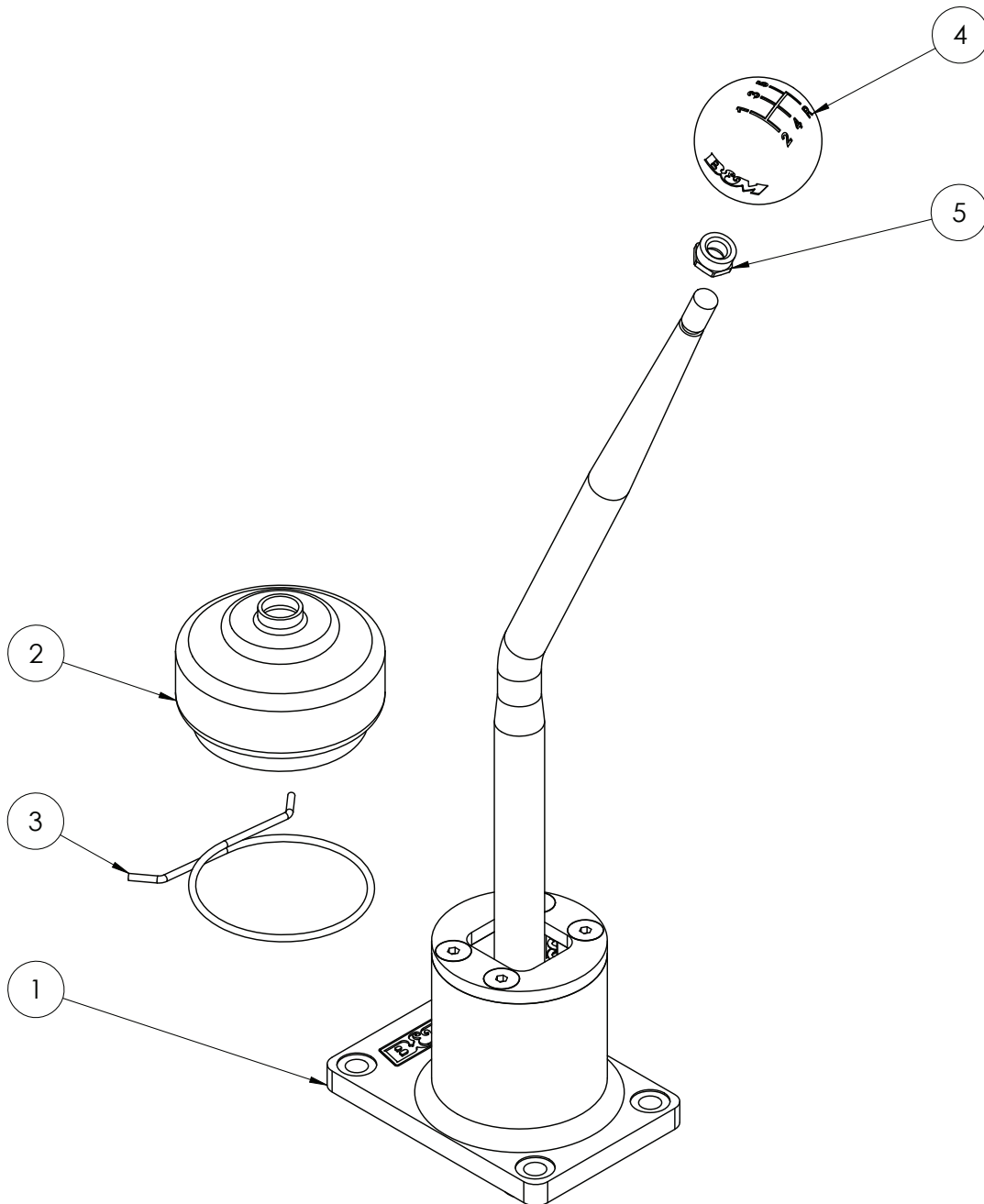




Installation Instructions
45206
 1987-02 JEEP WRANGLER
 with AX-5 Manual Transmission



| ITM # | PART # | DESCRIPTION | QTY. |
|-------|---------|------------------------------|------|
| 1 | 4101409 | Shift Assembly | 1 |
| 2 | 4100497 | Small Shifter Boot | 1 |
| 3 | 4100499 | Retaining Boot Ring (Small) | 1 |
| 4 | 4101410 | Shift Knob | 1 |
| 5 | 1794719 | Shift Handle 3/8-16 Lock Nut | 1 |

OVERVIEW:



1. This B&M Precision SportShifter is engineered to greatly reduce shift throw and improve shift feel.

NOTE: Please inventory all parts now and if necessary, report any missing items to our tech line.

WARNING:

For maximum safety, perform this installation on a clean, level surface with engine turned off.

CAUTION:

To avoid bodily injury or vehicle damage, chock wheels and do not attempt installation until you are confident your vehicle will not move.

REMOVE STOCK COMPONENTS:

NOTE: Some steps may contain multiple images to cover all applications for this product.



2. Remove stock shift knob insert.



3. Remove stock shift knob jam nut.



4. Remove stock shift knob.



NOTE: Depending on application, remove screws securing boot.

5. Remove shift boot.



6. Remove and retain center console fastener near shifter.



9. Remove and retain center console bolts (x2) from storage console.



7. Remove and retain fasteners securing passenger side of center console.



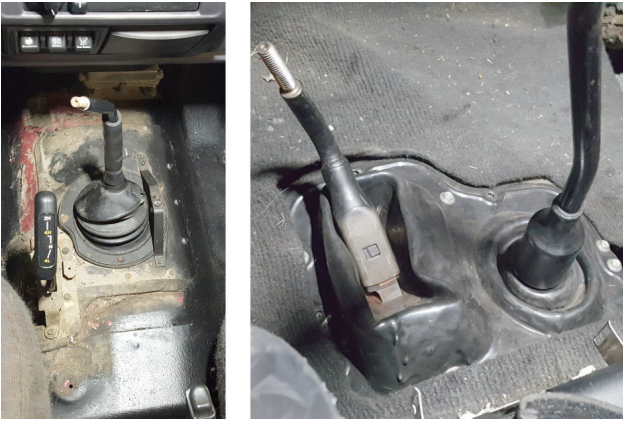
10. Pull up 4-wheel drive shift lever.



8. Remove and retain center console fasteners from cup holder.

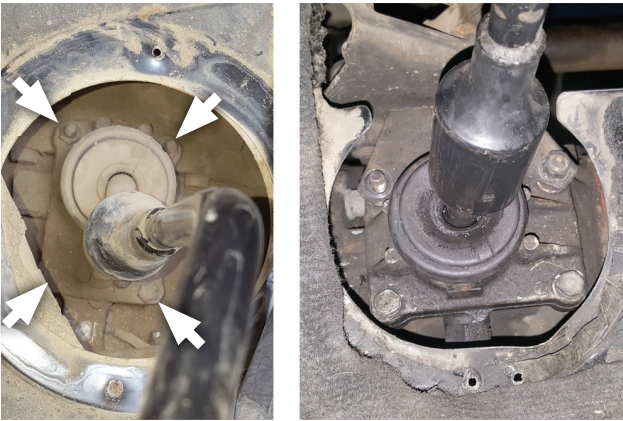


11. Remove center console.



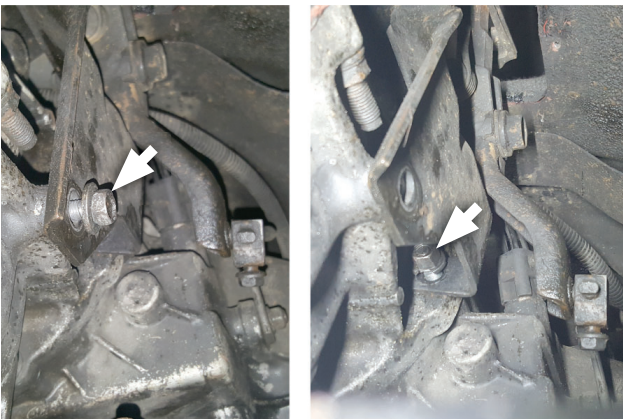
12. Remove bolts and rubber protective boot.

NOTE: It may be necessary to trim boot slightly around stick to remove it.



13. Remove bolts (x4) securing shifter to transmission.

NOTE: Depending on application, remove (x2 ea.) bolts, nuts and bracket attached to shifter base.

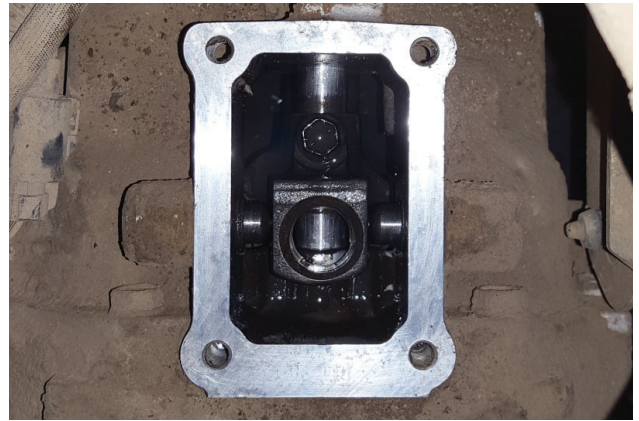


14. In some applications, remove lower bolts (x2) securing bracket.



NOTE: Inspect pivot cup for wear and tear. If necessary, you may want to purchase another before completing this install.

15. Pry pivot cup from stock shifter. Remove baffle.



16. Clean mounting surface on transmission.

Assemble & Install Precision Sport Shifter:



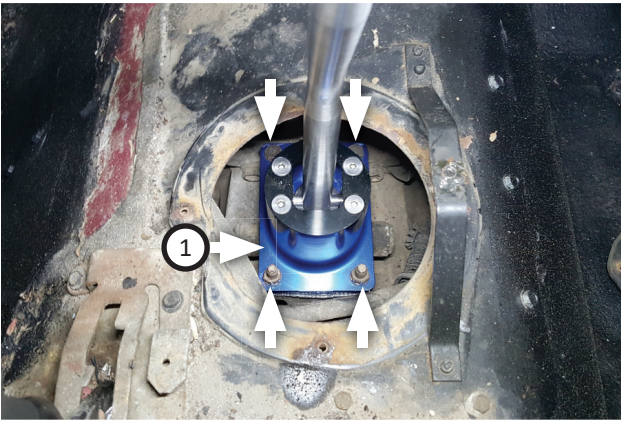
17. Press pivot cup onto B&M Shifter.



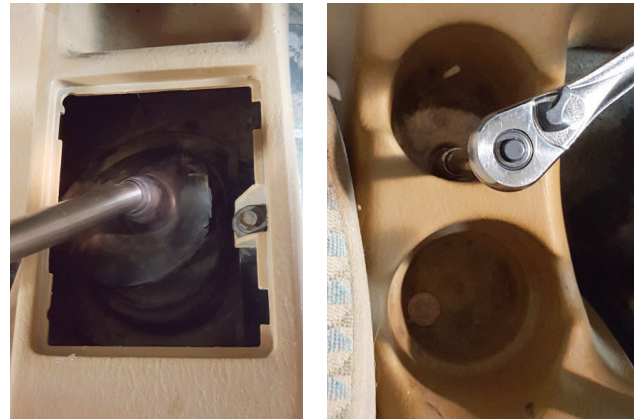
18. Install new shifter base gasket (not included) or apply RTV silicone sealant to the B&M shifter base.



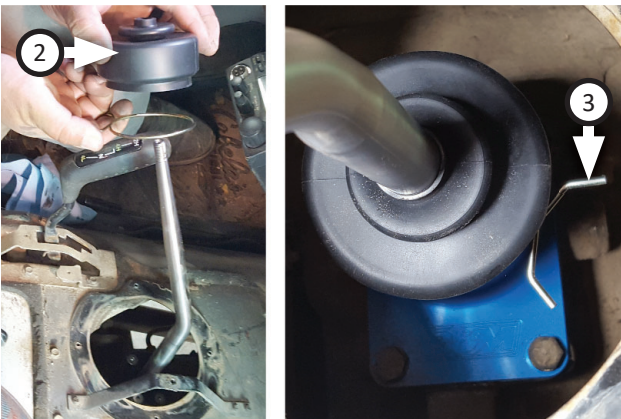
21. Re-install rubber protective boot and bolts removed step 12.



19. Fasten **shift assembly (1)** to factory shifter base using bolts (x4) removed step 13. Replace (x4) bolts, nuts and shifter bracket (if applicable).



22. Set console cover back into place then secure it using fasteners from step 6 through 9.



20. Use **retaining boot ring (3)** to secure **shifter boot (2)** onto shifter base.



23. Re-install shift boot, then thread **shift handle lock nut (5)** onto shifter stem.



24. Thread **shift knob (4)** onto shifter stem.



25. Adjust knob until it is in optimal position, then tighten it in combination with lock nut to secure it in place.



26. Test shifter engagement in each gear, then tighten all parts and verify shifter function once more.

WARNING:
DO NOT operate vehicle until all gears can be smoothly and fully engaged.



Congratulations, the installation of your B&M Precision SportShifter is now complete!

