



Installation Instructions 45043 Precision Sport Shifter 2004-06 Pontiac GTO

See "Applications" tab on this products page at www.bmracing.com
for complete vehicle & model year fitment

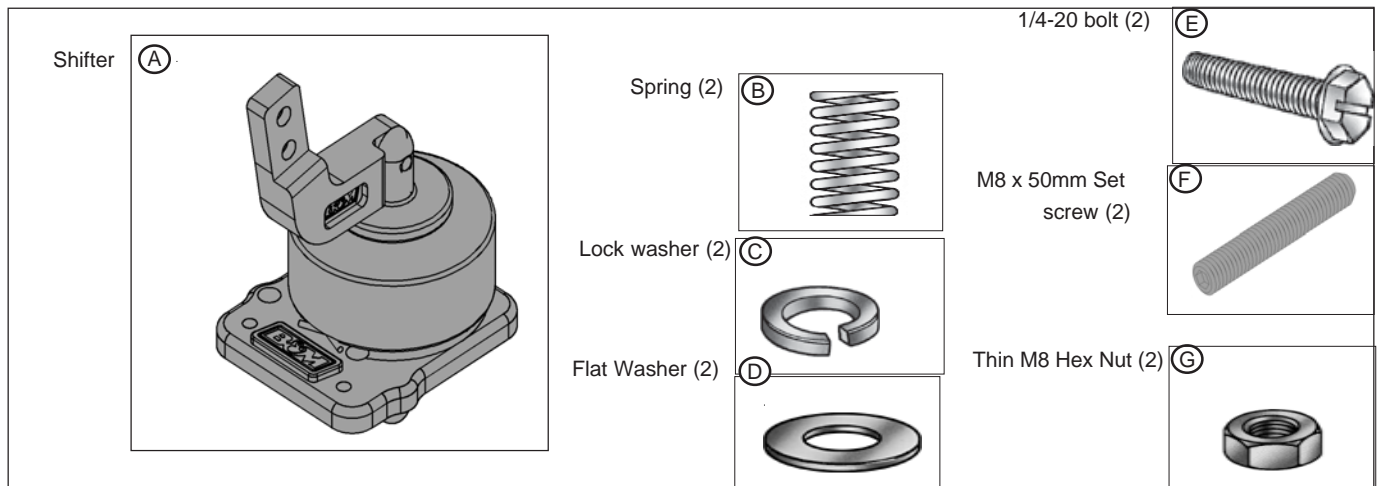
INTRODUCTION

This **B&M Precision Sport Shifter** is designed to work on 2004-2006 Pontiac GTOs equipped with manual transmissions. It is engineered to greatly reduce shift throw and to improve shifter feel.

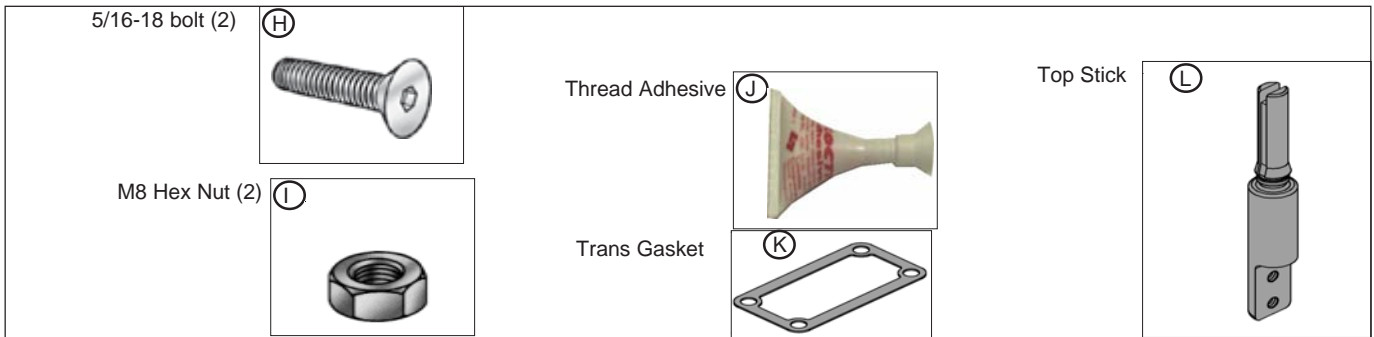
Installation of this B&M Precision Sport Shifter can be performed in about two hours by anyone with moderate mechanical experience. Please read and understand these instructions before beginning. Use the parts list below to verify your kit's contents. In the unlikely event that any parts are missing, please call B&M Technical Support for replacements.

Please note that vehicles used in competition or vehicles that may experience extreme vibration and/or heat may require lock wiring (safety wiring) and/or other methods to prevent some fasteners from loosening.

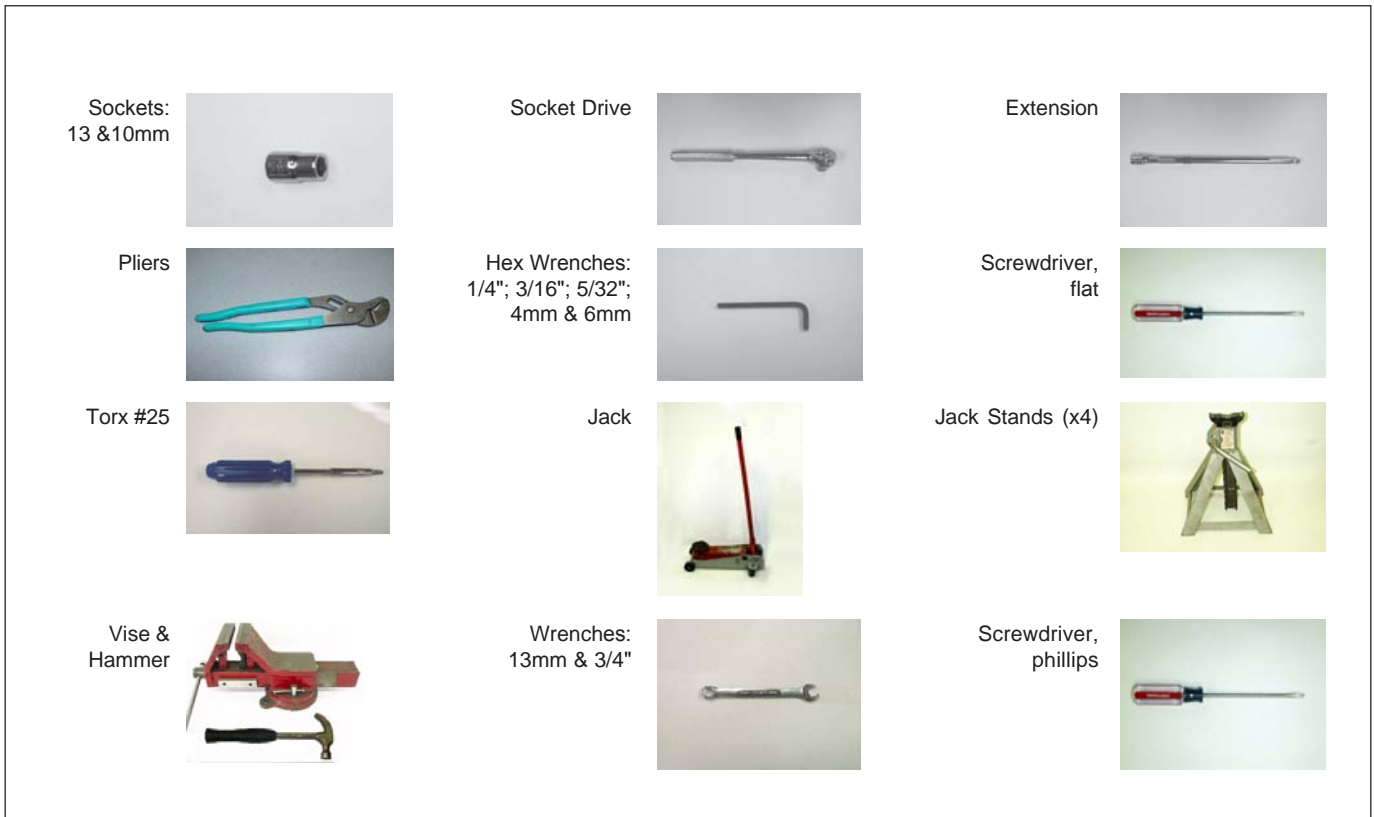
PARTS



PARTS (Continued)



TOOLS



DISASSEMBLY

STEP 1. Remove screw at front of console.
TOOL: Screwdriver (philips)



STEP 2. Lift up storage compartment at rear of center console and pull up on center console. Unplug wire connectors for windows and traction control.



STEP 3. Pull up and remove center console.



STEP 4. Pull up on plastic retainer for shift boot.



STEP 5. Remove bolts (2) securing top stick of stock shifter.
TOOLS: 10mm socket & Drive.



STEP 6. Raise vehicle.
TOOLS: Jack, Jack stands (4)



STEP 7. Remove nuts (4) holding down rubber boot.
TOOLS: 13mm socket, Extension, Drive & 13mm wrench.



STEP 8. Remove rubber boot.



STEP 9. Remove torx screws (4) holding down shift cover and remove.
TOOLS: T-25 drive screwdriver.



STEP 10. Remove bolts (4) and screws (3) holding down shifter.
TOOLS: 1/4" socket, Extension, Drive & Screwdriver (phillips)



STEP 11. Pull out entire stock shifter assembly, including o-ring.



STEP 12. Remove bolts (2) holding down GTO trans base.
TOOLS: 6mm Hex, Extension & Drive

OPTIONAL: Front (2) bolts of GTO trans base can be removed, GTO trans base removed and gasket can be replaced.

GTO Trans base



STEP 13. Remove stock knob by holding stick in vise and hitting knob with wrench.

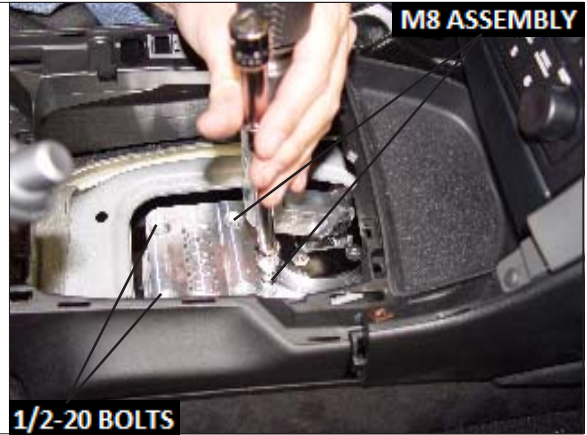
TOOLS: 3/4" Wrench, Hammer & Vise



ASSEMBLY

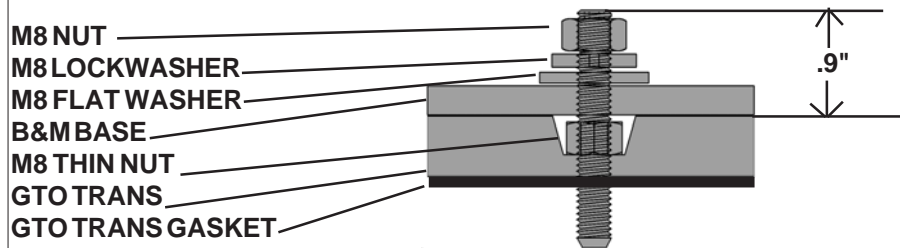
STEP 14. Install B&M shifter using (2) 1/4-20 bolts, (2) lock washers, (2) M8 nuts, (2) M8 thin nuts and (2) M8 washers.
 (SEE DIAGRAM BELOW FOR DETAILS)
TOOLS: Screwdriver (flat), Hex Wrench (6mm), thread adhesive, and wrench (13mm)

NOTE: FAILURE TO USE THREAD ADHESIVE COULD RESULT IN SHIFTER MALFUNCTION.



Torque 1/4-20 bolts to 8-10 ft-lbs.
 Caution do not overtorque bolts!!
 Torque M8 thin nuts to 8-10 ft-lbs.
 Torque M8 nuts to 15 ft-lbs.

Leave approx. 0.9" of M8 set screw thread above GTO Trans after locking down GTO Trans.



STEP 15. Reinstall rubber boot.

NOTE: On some earlier models a black boot was used which may need some trimming of the opening to allow for full gear engagement of 1, 3 & 5th gear. Or you can replace the black boot with the newer white boot, GM P/N: 92169196.



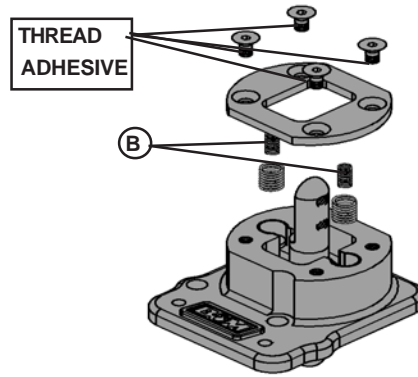
STEP 16. Install top stick (L) using (2) 5/16-18 bolts and thread adhesive.

TOOL: 3/16 Hex and adhesive.
 Torque bolts to 26 ft./lbs. (35 N/m)

NOTE: FAILURE TO USE THREAD ADHESIVE COULD RESULT IN SHIFTER MALFUNCTION.



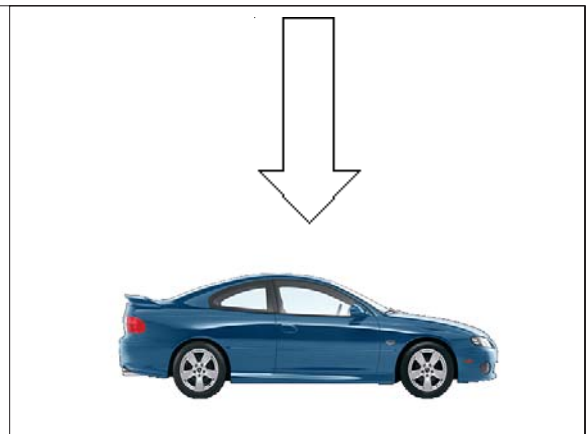
STEP 17. OPTIONAL: For more self-centering action, you can add the (2) springs (B) .
TOOL: 5/32 Hex & thread adhesive.
Torque bolts to 13 ft./lbs. (17 N/m)
NOTE: FAILURE TO USE THREAD ADHESIVE COULD RESULT IN SHIFTER MALFUNCTION.



STEP 18. Reinstall nuts (4) holding down rubber boot.
TOOLS: 13mm socket, Extension, Drive & 13mm wrench..



STEP 19. Lower vehicle
TOOLS: Jack, Jack stands (4)



STEP 20. Install shift knob and boot by firmly pushing knob onto B&M shifter and snap boot back in.



STEP 21. Reinstall wires onto windows and T/C switches on center console.



STEP 24. Reinstall center console.



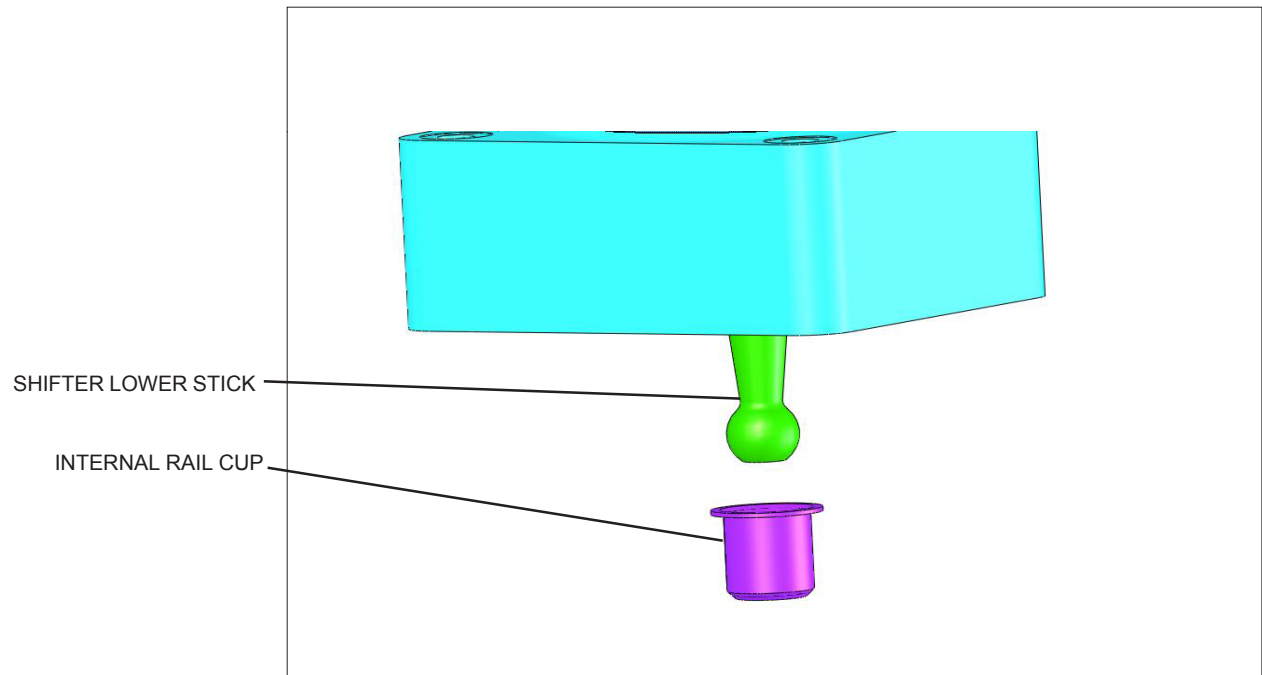
STEP 25. Reinstall screw for console.
TOOLS: Screwdriver (phillips)



STEP 26. Be sure all the parts have been securely tightened and shifter engages into each gear.



INSTRUCTION ADDENDUM FOR ALL TREMEC TRANSMISSION SHIFTER APPLICATIONS



INTERNAL RAIL CUP NOW SUPPLIED WITH TREMEC TRANSMISSION SHIFTERS, TO REPLACE POSSIBLE WORN INTERNAL RAIL CUPS.

The stock cup on your vehicle may be worn. Please inspect for excess looseness and replace if needed. Install cup on lower stick, then into transmission.

Congratulations, the installation of your B&M differential cover is now complete!

IMPORTANT: Keep these instructions for future reference.

